

NETWELL  
SYSTEM

# Hidroten

Sistemas y Tecnología del agua / Water System Technology

## NOTUB System Systeme NOTUB

Family/Famille  
1-2

**NEW**

SISTEMA  
**NOTUB**



- NETVITC SYSTEM®, PVC. Pres. Fittings
- PVC. Pres. glued fittings
- PVC. Pres. glued-thread fittings
- NETVITC®, Flange-coupling
- Flanges and adaptors
- Clamp saddles
- GFRP. Hinged sleeves
- P.P. Threaded fittings
- P.P. Fittings
- Brass pressure Fittings
- Electrofusion fittings/Welding fittings
- Butterfly valves
- NETVITC SYSTEM® Butterfly valves
- "BASIC" Ball valves
- Bidirectional "BASIC" Ball valves
- "Compact" valves
- "Semicompact" valves
- SYSTEM®, Check valves
- NETWELL®, Aspiration valves
- Lineal check valves
- Check (non return) valve with spring
- NET®, Air release valve
- Angle seat valves
- Drip irrigation
- Micro-irrigat. Fittings
- Filter
- Netvitic System® Filter
- Netvitic System® Extinguishers
- Fluids display socket
- U-PVC. Glue and cleaner
- Drainage / Evacuation.

*Reduce gluing  
procedure by **50%***



HIDROTEN, S.A., adds the **NOTUB SYSTEM** to its fittings range with the aim of **optimizing at maximum the output** of your installations, by reducing number of collages as well as space needed for direct connection among fittings and valves.

*HIDROTEN, S.A., intègre à sa gamme d'accessoires le **SYSTEME NOTUB** dans le but d'optimiser au maximum le rendement de vos installations, en réduisant le nombre de collages ainsi que l'espace nécessaire pour réaliser les unions directes entre les accessoires et les vannes.*

**S.A.T.C.**

Servicio Atención Técnica Comercial

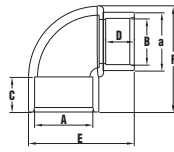
TEL. (+34) 966 105 888

www.hidroten.es  
comercial@hidroten.es  
export@hidroten.es  
publicidad@hidroten.es



# NOTUB System

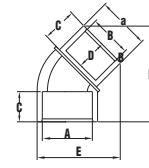
## PRODUCT RANGE / GAMME DE PRODUIT



02

### 90° reducing elbow / Coude réducteur 90°

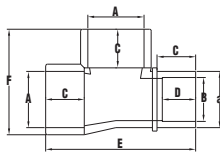
CODE CODE	A-a-B	UNIT GROSS WEIGHT	C	D	E	F
01603	32x32x25	48	22	19	59	56
01604	40x40x32	87	26	22	89	65
01605	50x50x40	125	31	26	102	85
01606	63x63x50	274	38	31	122	109
01607	75x75x63	415	45	38	145	123



198

### 45° elbow plain/F. threaded / Coude 45° à coller/taraudé

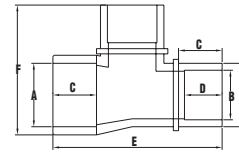
CODE CODE	A-a-B	UNIT GROSS WEIGHT	C	D	E	F
01742	32x32x25	40	22	19	58	55
01743	40x40x32	65	26	22	87	63
01744	50x50x40	130	31	26	97	88
01745	63x63x50	202	38	31	117	106



201

### 90° tee plain/threaded plain / Té 90° à coller/taraudé à coller

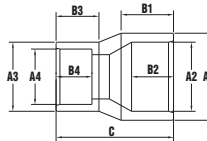
CODE CODE	A-a-B	UNIT GROSS WEIGHT	C	D	E	F
01752	32x32x25	62	22	19	85	59
01753	40x40x32	102	26	22	106	74
01754	50x50x40	175	31	26	125	88
01755	63x63x50	256	38	31	154	104



202

### 90° tee plain/threaded plain / Té 90° à coller/taraudé à coller

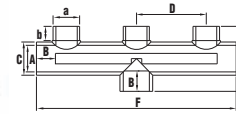
CODE CODE	A-a-B	UNIT GROSS WEIGHT	C	D	E	F
01762	32x32x25	61	22	19	85	66
01763	40x40x32	105	26	22	106	81
01764	50x50x40	180	31	26	125	99
01765	63x63x50	249	38	31	154	121



545

### Conical reducing / Manchon réducteur conique

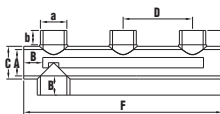
CODE CODE	A-a-B	UNIT GROSS WEIGHT	B1	B2	B3	B4	C
01103	40/32/32/25	32	26	22	22	19	55
01104	50/40/40/32	57	31	26	26	22	66
01105	63/50/50/40	110	38	31	31	26	80
01106	75/63/63/50	165	44	38	38	31	93



409

### PVC manifold / Collecteur d'aspiration 3 entrées mixtes

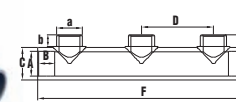
CODE CODE	A-a	UNIT GROSS WEIGHT	b	B	C	D	E	F
01269	32	470	22	22	40	115	88	308
01270	50	677	26	34	61	131	123	380
01272	50-63	725	26	38	61	131	128	380
01271	63	1.143	26	38	75	165	151	475



626

### 3 channel manifold lateral plain outlet / Collecteur a 3 voies sortie laterale

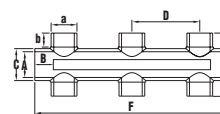
CODE CODE	A-a	UNIT GROSS WEIGHT	b	B	C	D	E	F
01273	32	470	22	22	40	115	88	308
01275	63-50	1.085	21	38	75	165	146	475
01276	63-63	1.143	26	38	75	165	151	475



703

### Solvent socket PVC manifold / Collecteur 3 entrées à coller

CODE CODE	A-a	UNIT GROSS WEIGHT	b	B	C	D	E	F
01292	32-32	465	19	22	40	115	67	308
01294	63-50	1.085	21	38	75	165	97	475
01293	63-63	1.143	26	38	75	165	102	475



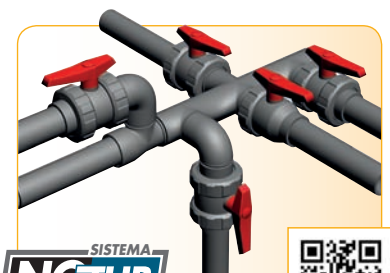
760

### PVC manifold / Collecteur d'aspiration 6 entrées mixtes

CODE CODE	A-a	UNIT GROSS WEIGHT	b	B	C	D	E
01682	32	564	22	22	40	115	88
01684	50	815	26	34	61	131	123
01685	63	1.380	26	38	75	165	151

NOTUB System fittings and valves range allows making installations between them with no need of tube, reducing the number of collages and bringing the maximal economy and security.

La gamme d'accessoires et vannes avec système NOTUB permet de réaliser des installations sans l'utilisation du tube, ce qui minimise le nombre de collages, apportant l'économie et la sécurité maximale.



SISTEMA  
**NOTUB**

